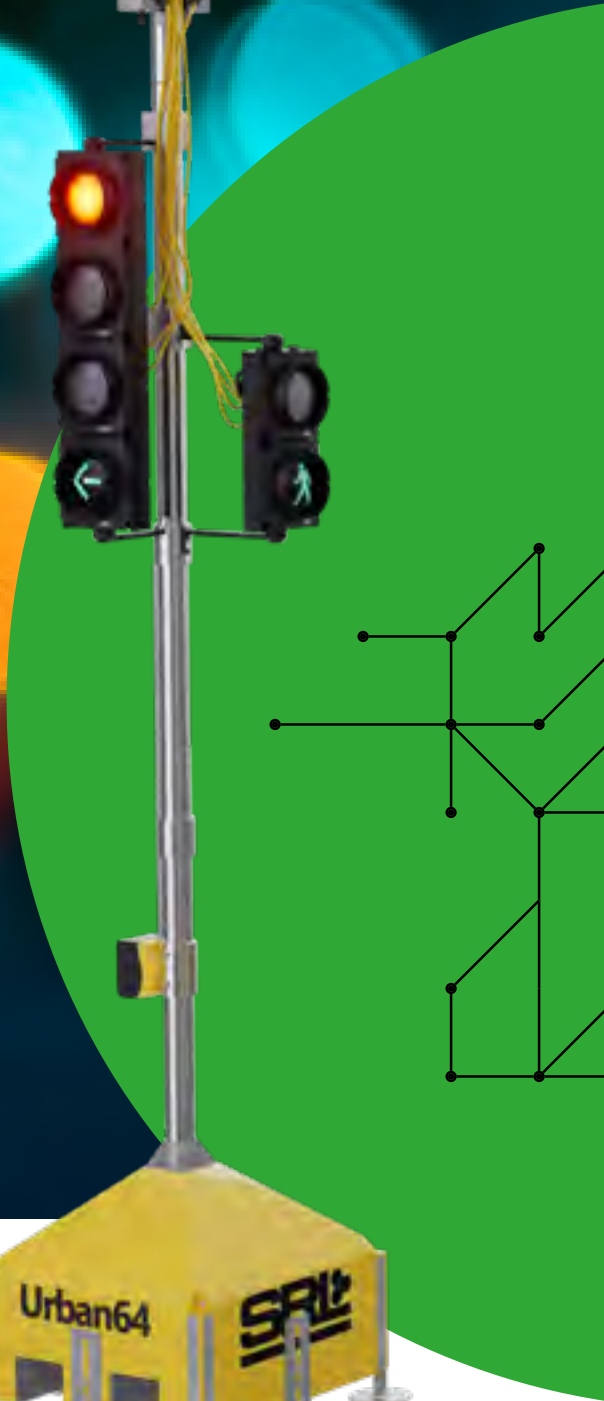
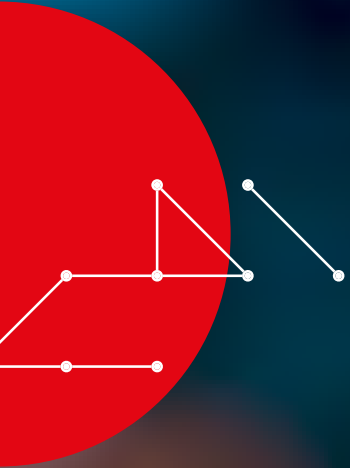




Urban64®



INTELLIGENT TEMPORARY
SYSTEM, UNRIVALLED INNOVATION

Urban64®



Brought to you by SRL Traffic Systems, the Urban64® intelligent temporary system was the first standalone temporary traffic light solution to feature permanent technology, enabling site bespoke layouts for the safe flow of vehicles, cyclists and pedestrian traffic during construction phases.

Urban64® is also the **only** intelligent temporary system to use **MOVA (Microprocessor Optimised Vehicle Actuation)**, a sophisticated traffic control strategy, specifically designed to maximise operational efficiency of a junction.

Urban64® can replicate preceding permanent systems but because cabling is overhead it can be implemented quickly and safely whilst permanent equipment is removed. It delivers cost certainty, promoting traffic efficiency and safety, and the flexibility to adjust layouts in line with the project development.

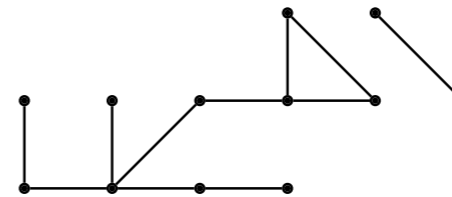
SRL's team support schemes from initial concept to completion, offering bespoke layout designs to suit the temporary works including; full installation, maintenance, 24/7 call out, decommissioning, inspections and site visits.

Urban64® is a flexible, cost effective solution which adapts to your projects.



Why choose Urban64®?

- ✔ **Potential reduction in timescale** (compared to traditional Poles-In-Barrels approach)
- ✔ **No cabling through ducting required**, all cables run overhead a minimum of 6.5m above carriageway, away from ongoing works
- ✔ **No maintenance of the existing permanent signals** whilst under refurbishment. All permanent infrastructure (cables, poles, signals, loops) can be removed from site
- ✔ **Improved site safety** as no working around live cabling at low-level
- ✔ **Replication of the method of control of permanent signals**, or a more suitable bespoke configuration to suit the ongoing works
- ✔ **No batteries to change** - secure 48v cabling and data cabling derived from mains feed
- ✔ Ability to **adjust layouts within a short time** as schemes change throughout their construction stages



Urban64®



Key features & benefits



UTC / UTMC Connectivity

UTMC helps coordinate the system with nearby permanent sites, with remote monitoring.



Overhead Cabling

Taller posts than traditional and portable traffic lights (minimum 6.5m above the carriageway) gives high usability and promotes safety and efficiency and is suitable for high-speed motorway junctions.



Walk with Traffic Pedestrian

Enables traffic and pedestrian movements to operate simultaneously where possible, providing maximum junction efficiency and safe operation.



Conditional Phase Appearance

Enabling split phase, early start, early cut-off and conditional appearance concepts to maximise the junction efficiency and flow.



Secure 48v Cabling and Data Cabling

With no batteries, Urban64® avoids the risk of battery failure and battery changes, promoting low maintenance and efficient operation.



Indicative Filter Phases

4-in-line or 5-in-line signal options where required.



MOVA Capability and Licensed

The dynamic strategy for adapting green times for unpredictable and heavy traffic flows.



Up to 64 Signals

Urban64® can incorporate up to 64 sets of traffic lights in comparison with circa 20-39 in more traditional portable solutions, making it suitable for very large projects.



Four Streams per Controller

Enables up to four traffic streams to be simultaneously controlled via a single master controller for superior efficiency on more complex sites.



Remote Monitoring

Remote monitoring and control via a 4G router, directly interfacing with the controller LCD display.



Programmable Timetable of Max Sets and Plans

Enabling changeable timings for AM peak, PM peak, Off-peak etc for optimum performance.



Cyclist Phases

Enabling the use of low-level cycle signals.



Urban64® Accessories



CCTV

- Complete fisheye 360° panoramic view with zoom, or quad view
- Maximum resolution 640x480 pixels, special model 1280x1024 pixels available
- 10x digital zoom



Pedestrian Countdown Timer

- A countdown timer is available alongside the Green Man aspect
- Research shows such a timer increases pedestrians understanding of Pelican crossings and therefore their safety



Cyclists "Head-start"

- Small red/amber/green cycle signal
- Mounted at a lower height for easy cyclist visibility
- Aimed to give cyclists a head start before vehicles in order to increase cyclists safety in difficult conditions



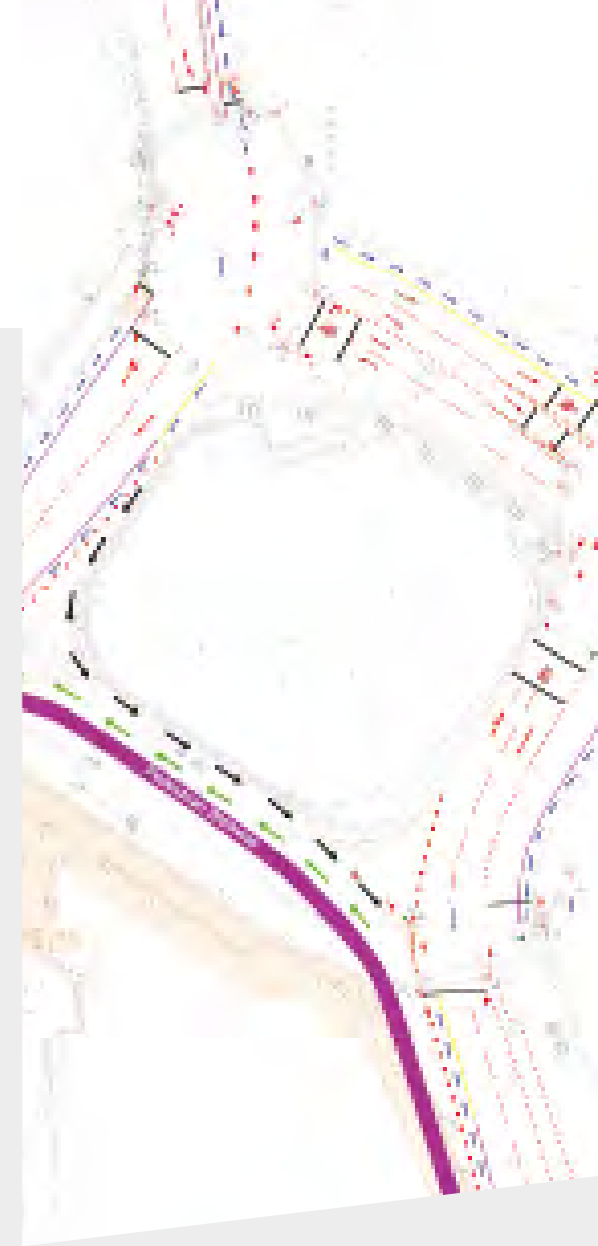
Video Detector

- Used to separate filter lanes
- Direct visual verification of presence zones
- Allows exact positioning and verification of the vehicle presence detection zones
- As these zones are displayed on a video image, they are easily repositioned to make allowances for changing traffic situations



Box Signs

- 300x300mm regulatory box signs available as a 4th aspect beneath the green LED. Options including: No right turn, no u turn, ahead only, turn left, turn right
- Secret signs can be programmed to illuminate for set periods TrafiCam Intelligent

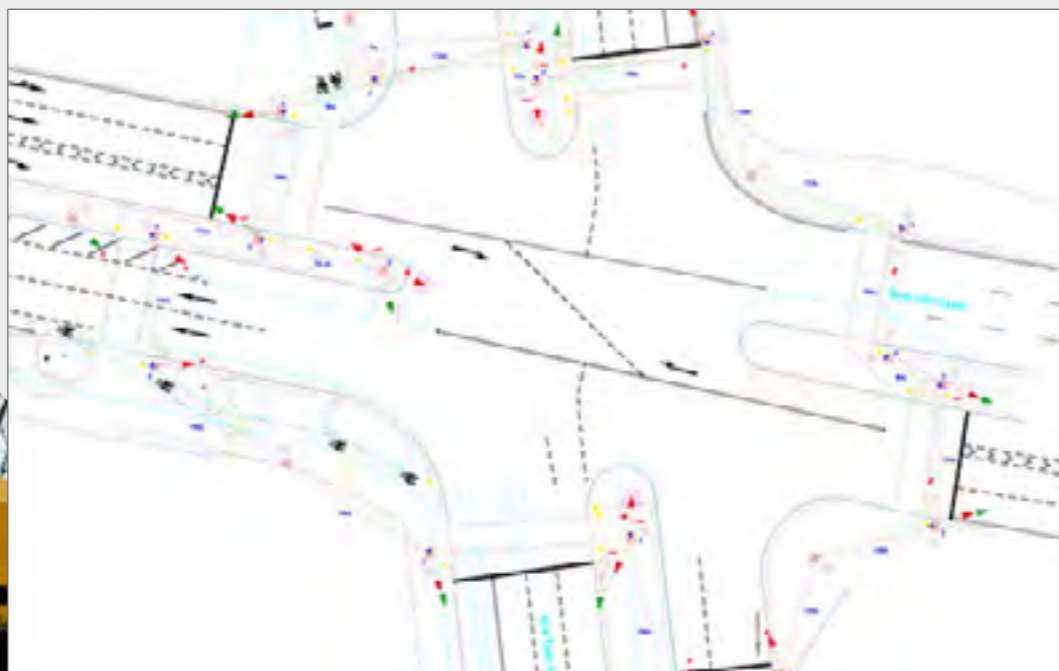
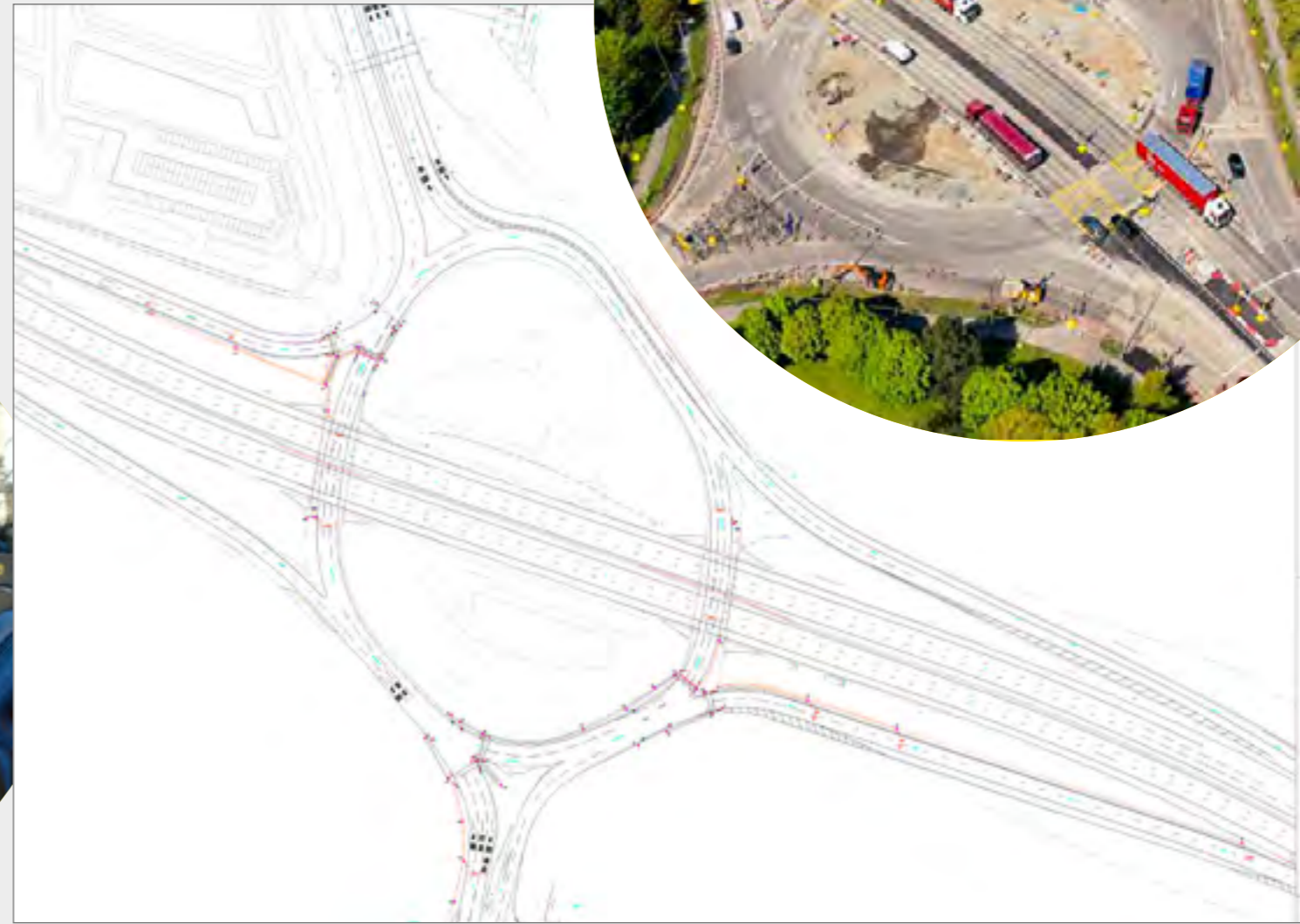


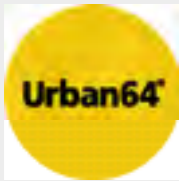
Approvals

- Highways Agency Approval TR2500A
- Highways Agency Approval TR2503



From Concept to Completion





Installation Offsite Build

Our new Urban64® offsite build installation process offers up to 40% reduction in install time, delivering cost reductions, enhanced reliability and increased efficiency.



Significant Time & Cost Savings

The greatest time savings are evident in sites of 18 signals or more where installation would typically take two nights previously.

The condensed installation period positively influences the overall project timelines and reduces associated traffic management costs and requirements (saving time and money).

Furthermore, we have reduced our installation fees by 25% as a result of offsite build.



Improved Efficiency & Accuracy

With offsite build, our experienced team is able to conduct thorough testing in our specialist Urban64® centres before the commissioning team arrive on site, saving valuable time and reducing the likelihood of delays on site if anomalies are identified. Minimal disruption occurs due to fewer nights and less vehicles needed for install.



Reduced Risk

Offsite build reduces the number of installers working onsite down to four or five (previously seven) and the time required for install, meaning less people, working for less time next to live lanes and roads.

Offsite Build Installation Process

SRL's **NEW** offsite build installation process is made possible with newly designed blocks and poles which facilitate a more efficient way of transporting the system to site, and thereafter the install and commissioning.

Previously, poles were transported horizontally. Once on site, signal heads and cables were attached to poles, which were then placed in blocks. Cabling was then connected with the help of a cherry picker.

The new design means poles are modular and placed into blocks before transportation. The modular design enables Urban64® poles to be collapsed into thirds and cabled (with signal heads attached) at a specialist Urban64® centre before going to site.

Next, the blocks, poles and signals are transported, ready to be installed quickly and safely on site upon arrival.

Once on site, the blocks are placed into position and each pole is simply assembled to full height. Signals are then connected, before commissioning can occur, reducing installation time by up to 40%.



There's nothing like Urban64® out there on the market. It is the only temporary system that has intelligent technology to allow for efficient phasing of traffic and pedestrian systems. This makes junctions flow better, eases road user frustration and reduces complaints.

Like every product in SRL's extensive range, Urban64® is robust and user-friendly and is backed by high levels of customer and technical support.

Ross Simpson

Contracts Manager at Highway Traffic Management



The Smart Choice

SRL have the UK's largest hire fleet of portable and temporary traffic lights and pedestrian signals, and more recently a comprehensive range of VMS signs, CCTV and security barriers.



Portable Traffic Signals & Pedestrian Systems



Temporary Traffic Signals & Pedestrian Systems



Multiphase ADS



A wide range of Smart Signs (VMS)



Security Barriers



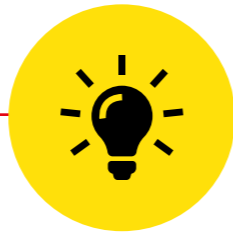
CCTV



SRL Telematics



Haul Route Crossings



Ready to Support You

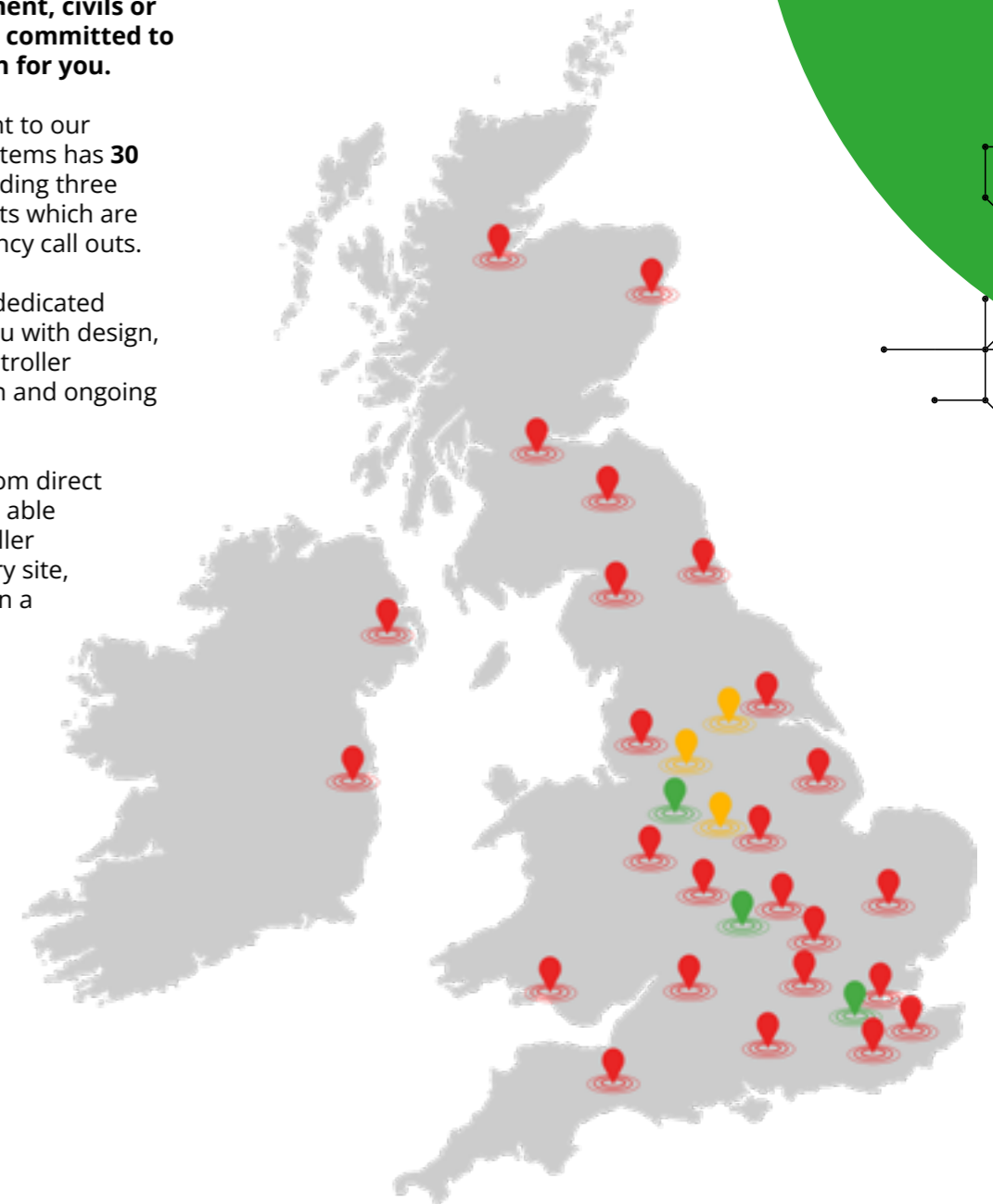


SRL Traffic Systems has the knowledge and experience to help our customers from the initial idea right through to project completion. Whether you work in traffic management, civils or local authorities, we are committed to finding the right solution for you.

As part of our commitment to our customers, SRL Traffic Systems has **30 nationwide depots**, including three dedicated Urban64[®] depots which are available 24/7 for emergency call outs.

Urban64[®] boasts its own dedicated team, ready to support you with design, presentation support, controller configurations, installation and ongoing maintenance.

Customers also benefit from direct technical support; SRL are able to remotely access controller displays and CCTV on every site, via a 4G router with SIM on a smartphone or computer.





SRL Traffic Systems Limited

The Light House, Unit 15, Road 5, Winsford Industrial Estate, Winsford, Cheshire, CW7 3SG

T: 01606 738866 • **W:** SRL.co.uk • **E:** urban64@srl.co.uk

Version 2 | June 2024